

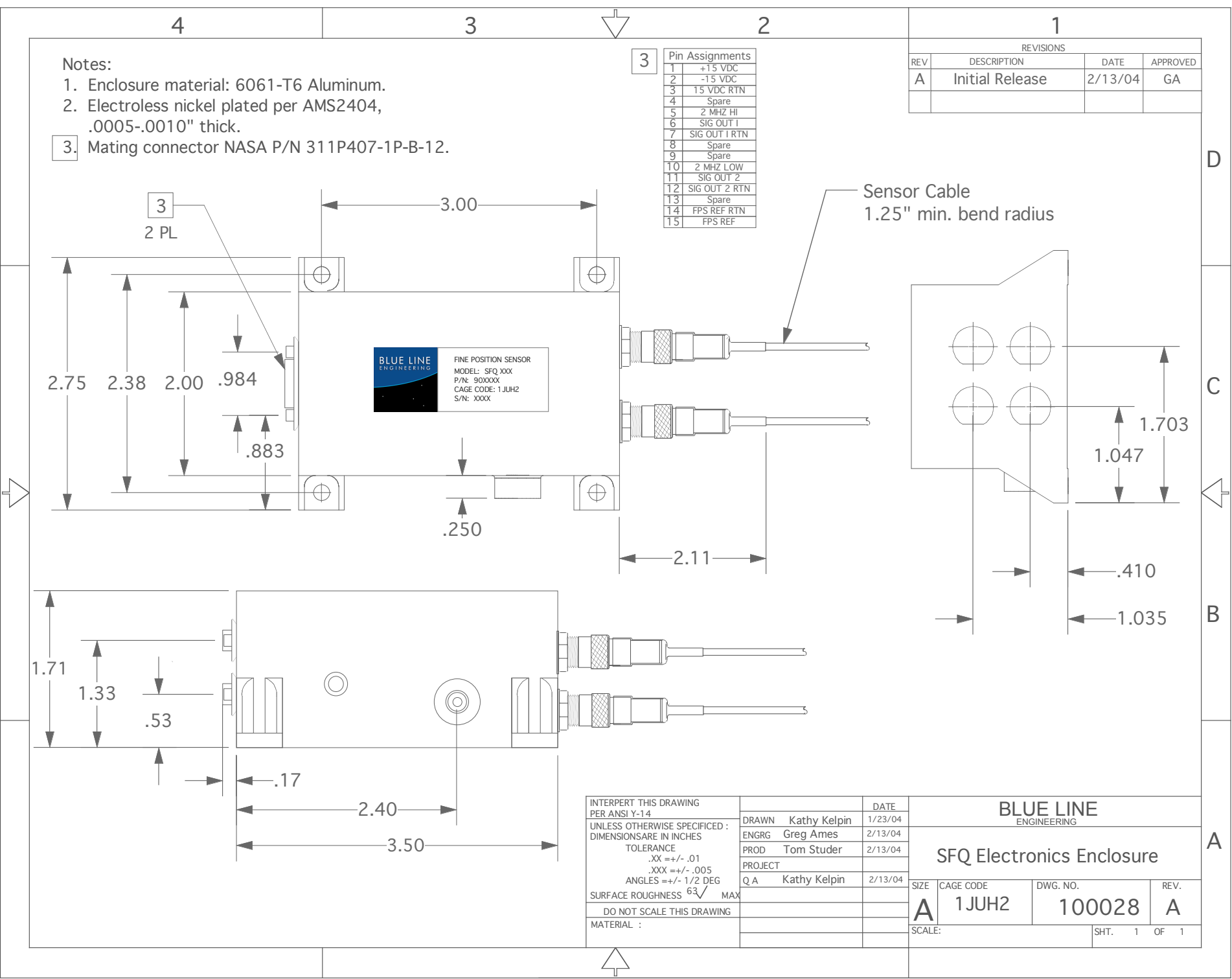
Notes:

1. Enclosure material: 6061-T6 Aluminum.
2. Electroless nickel plated per AMS2404, .0005-.0010" thick.
3. Mating connector NASA P/N 311P407-1P-B-12.

3

Pin Assignments	
1	+15 VDC
2	-15 VDC
3	15 VDC RTN
4	Spare
5	2 MHZ HI
6	SIG OUT 1
7	SIG OUT 1 RTN
8	Spare
9	Spare
10	2 MHZ LOW
11	SIG OUT 2
12	SIG OUT 2 RTN
13	Spare
14	FPS REF RTN
15	FPS REF

REVISIONS			
REV	DESCRIPTION	DATE	APPROVED
A	Initial Release	2/13/04	GA



BLUE LINE ENGINEERING
 FINE POSITION SENSOR
 MODEL: SFQ XXX
 P/N: 90XXXX
 CAGE CODE: 1JUH2
 S/N: XXXX

INTERPERT THIS DRAWING PER ANSI Y-14 UNLESS OTHERWISE SPECIFIED: DIMENSIONS ARE IN INCHES TOLERANCE .XX = +/- .01 .XXX = +/- .005 ANGLES = +/- 1/2 DEG SURFACE ROUGHNESS 63√ MAX DO NOT SCALE THIS DRAWING MATERIAL :	DRAWN	Kathy Kelpin	DATE	1/23/04
	ENGRG	Greg Ames	DATE	2/13/04
	PROD	Tom Studer	DATE	2/13/04
	PROJECT			
	Q A	Kathy Kelpin	DATE	2/13/04

BLUE LINE ENGINEERING			
SFQ Electronics Enclosure			
SIZE	CAGE CODE	DWG. NO.	REV.
A	1JUH2	100028	A
SCALE:		SHT. 1 OF 1	